



COWEE CUTTING INSERT

GOWEE CUTTING INSERT



ZHUZHOU COWEE CUTTING TOOLS CO., LTD

📍 Address: No. 102, 202, Plant 14, Zhongnan highTech Zhuzhou Zhichuang Plaza, No. 1, Jinma Road, Songshan Road Street, Tianyuan District, Zhuzhou City, Hunan Province, china.

📞 Mobile phone/Whatsapp/Wechat : +86-18673327292

@ Email: cowee@gwcarbide.com

🌐 Company website: www.cowee.vip

www.cowee.vip

COMPANY PROFILE

Zhuzhou Cowee Cutting Tools Co., Ltd. is a professional manufacturer and supplier of metalworking Tools. The company provides high-performance standard products and special customized products, which can fully meet the various application requirements of global customers in industries such as metal processing, aerospace, and mold. The company pursues responsible and sustainable business behavior, adhering to the cooperation philosophy of honesty and trustworthiness towards customers, and always ensuring the delivery of high-performance products with consistent quality to customers.



HIGH QUALITY ASSURANCE

Cowee Owns a complete CNC insert production line, it including raw materials spraying treatment, mold making, deep processing, coating, etc. we are committed to research and development on Solutions of high-performance CNC cutting tools.

We are Equipped with some worlds top brand of precision high-end equipment, such as OSTERWALDER multi-axis electric press, CNC peripheral grinder, Balzer coating furnace.

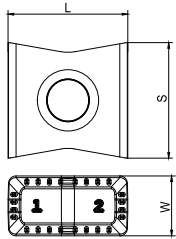
Cowee adopts automatic numerical control equipment for raw material preparation, pressing, sintering, coating and products inspection.

We also have the advanced equipment' s like Mikron machining center and leading coating processing and world-class quality control system to ensure the good quality of our carbide insert.


We are aiming to provide the high-quality CNC cutting tools and improve the production efficiency to users and fully meet the strict requirements on insert quality.



LN□□ Inserts

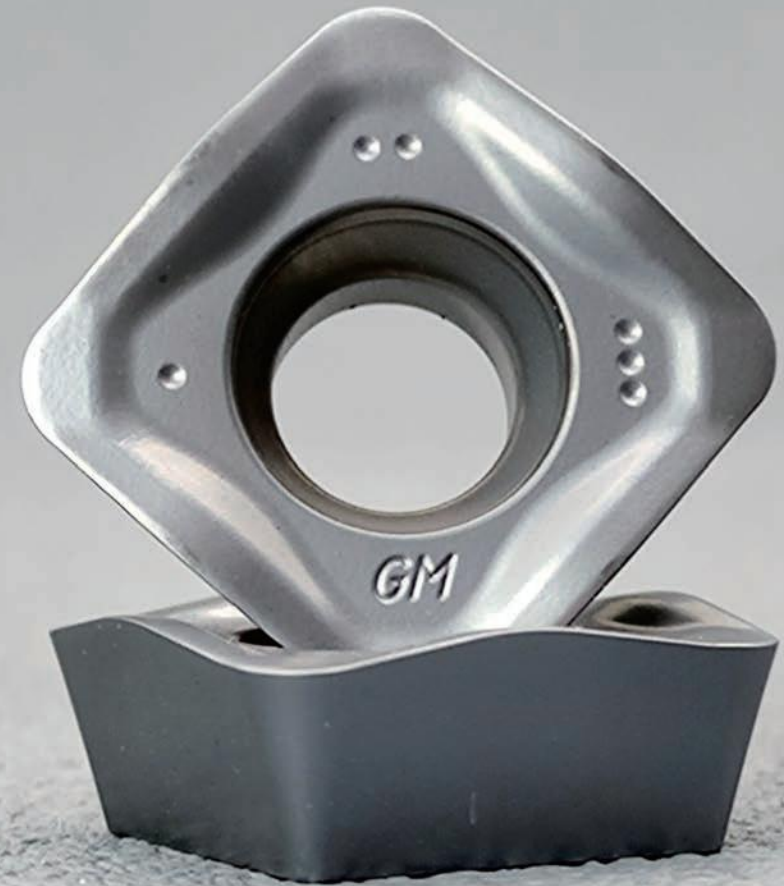


Type	Size(mm)		
	L	S	W
120608	12.7	12.25	6.35

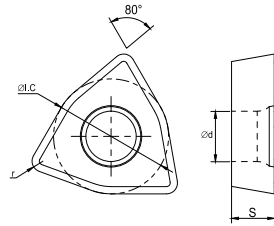
Shape	Type	Ap (mm)	Fn (mm/rev)	CVD		PVD									
				GW0203	GW0403	GW0151	GW0251	GW8241	GW8251	GW5251	GW8281	GWRF0101	GWRF5201	GWRF5251	GWRF0291
	LNKX120608	2.00-7.00	0.10-0.20			◇	◆	◇	◆	◆	◇				

Note: ◆ Recommended grade ready to stock

GW
CUTTING TOOLS
DRILLING INSERTS



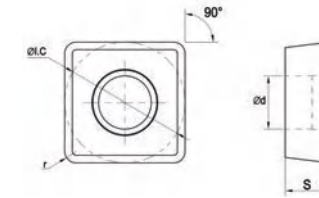
WC□□ Inserts



Shape	Type	Boring Range (mm)	Size					Application	Grade	
			L	øI.C	S	Φd	r		PVD	
									GW0251	GW8251
	WCMT030208-GM	16-20	3.8	5.56	2.38	2.8	0.8	Semi-finishing	◆	◆
	WCMT040208-GM	21-25	4.3	6.35	2.38	3.1	0.8		◆	◆
	WCMT050308-GM	26-30	5.4	7.94	3.18	3.2	0.8		◆	◆
	WCMT06T308-GM	31-41	6.5	9.525	3.97	3.7	0.8		◆	◆
	WCMT080412-GM	42-58	8.7	12.7	4.76	4.3	1.2		◆	◆

Note: ◆ Recommended grade ready to stock

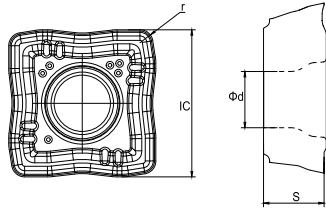
SP□□ Inserts



Shape	Type	Boring Range (mm)	Size					Application	Grade	
			L	øI.C	S	Φd	r		PVD	
									GW0251	GW8251
	SPMT050204-GM	12.5-15	5	5	2.38	2.2	0.4	Semi-finishing	◆	◆
	SPMT060204-GM	15.5-21.5	6	6	2.38	2.6	0.4		◆	◆
	SPMT07T308-GM	22-27.5	7.94	7.94	3.97	2.8	0.8		◆	◆
	SPMT090408-GM	28-33	9.8	9.8	4.3	4.2	0.8		◆	◆
	SPMT110408-GM	34-41	11.5	11.5	4.76	4.4	0.8		◆	◆
	SPMT140512-GM	42-50	14.3	14.3	5.2	5.75	1.2		◆	◆

Note: ◆ Recommended grade ready to stock

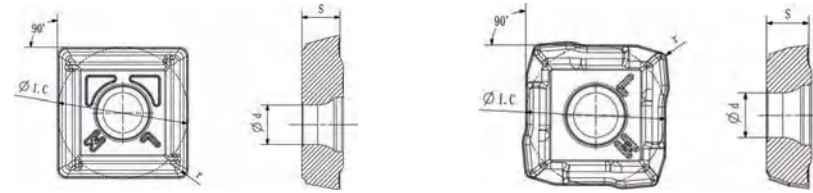
SO□□ Inserts



Shape	Type	Boring Range (mm)	Size					Application	Grade	
			L	ØI.C	S	Φd	r		PVD	
									GW0251	GW8251
	SOMT040204-VP	13-16	1	4.4	2.38	2.2	0.4	Semi-finishing	◆	◆
	SOMT050204-VP	13-16	1.2	4.9	2.38	2.2	0.4		◆	◆
	SOMT060204-VP	16.5-17	1.8	5.7	2.38	2.6	0.4		◆	◆
	SOMT070306-VP	17.5-19	1.8	6.8	2.8	2.6	0.6		◆	◆
	SOMT08T306-VP	22.5-26.5	2	7.8	3.97	2.8	0.6		◆	◆
	SOMT09T308-VP	27.5-31.5	2.4	9.2	3.97	3.8	0.8		◆	◆
	SOMT11T308-VP	32-36.5	3	11	3.97	3.8	0.8		◆	◆
	SOMT130408-VP	37-43	3.2	12.8	4.4	4.5	0.8		◆	◆

Note: ◆ Recommended grade ready to stock

SO SP□□ Inserts



Shape	Type	Boring Range (mm)	Size				Application	Grade	
			ØI.C	S	Φd	r		PVD	
								GW0251	GW8251
	SOMT050305C-LM	24-29	8.40	3.00	3.20	0.50	Medium Machining	◆	◆
	SOMT060406C-LM	30-41	10.20	3.50	4.00	0.60		◆	◆
	SOMT070406C-LM	30-41	12.36	4.00	4.00	0.60		◆	◆
	SOMT080508C-LM	44-63	14.90	4.50	4.70	0.80		◆	◆
	SOMT090608C-LM	44-63	17.90	5.50	4.70	0.80		◆	◆
								◆	◆
	SPMT050308P-LM	24-29	8.90	3.00	3.20	0.80	Medium Machining	◆	◆
	SPMT060408P-LM	30-41	10.70	3.50	4.00	0.80		◆	◆
	SPMT070410P-LM	30-41	12.70	3.95	4.00	1.00		◆	◆
	SPMT080510P-LM	44-63	15.50	4.50	4.70	1.00		◆	◆
	SPMT090610P-LM	44-63	18.60	5.50	4.70	1.00		◆	◆